

# ABSOLUTE



**hall**  
MARINER GRES



# ORIGINAL TEXTURES

LA COLLEZIONE ABSOLUTE E' UN CONNUBIO PERFETTO TRA PASSATO E PRESENTE. CARATTERIZZATA DA DECORI RICCHI DI DETTAGLI BRILLANTI E CONTRASTI MATERICI CHE CREANO AMBIENTI PIENI DI SFUMATURE.

ABSOLUTE RANGE IS A PERFECT BLEND OF PAST AND PRESENT. MARKED BY BRILLIANT DETAILS AND TEXTURED CONTRASTS, WHICH CREATE FULL-OF-NUANCES LOCATIONS.







02 **WALL:** Absolute Ice 30x90 cm | Absolute Muretto Silver 30x90 cm **FLOOR:** Absolute Cement Smoke 80x80 cm

## LIVING LOFT







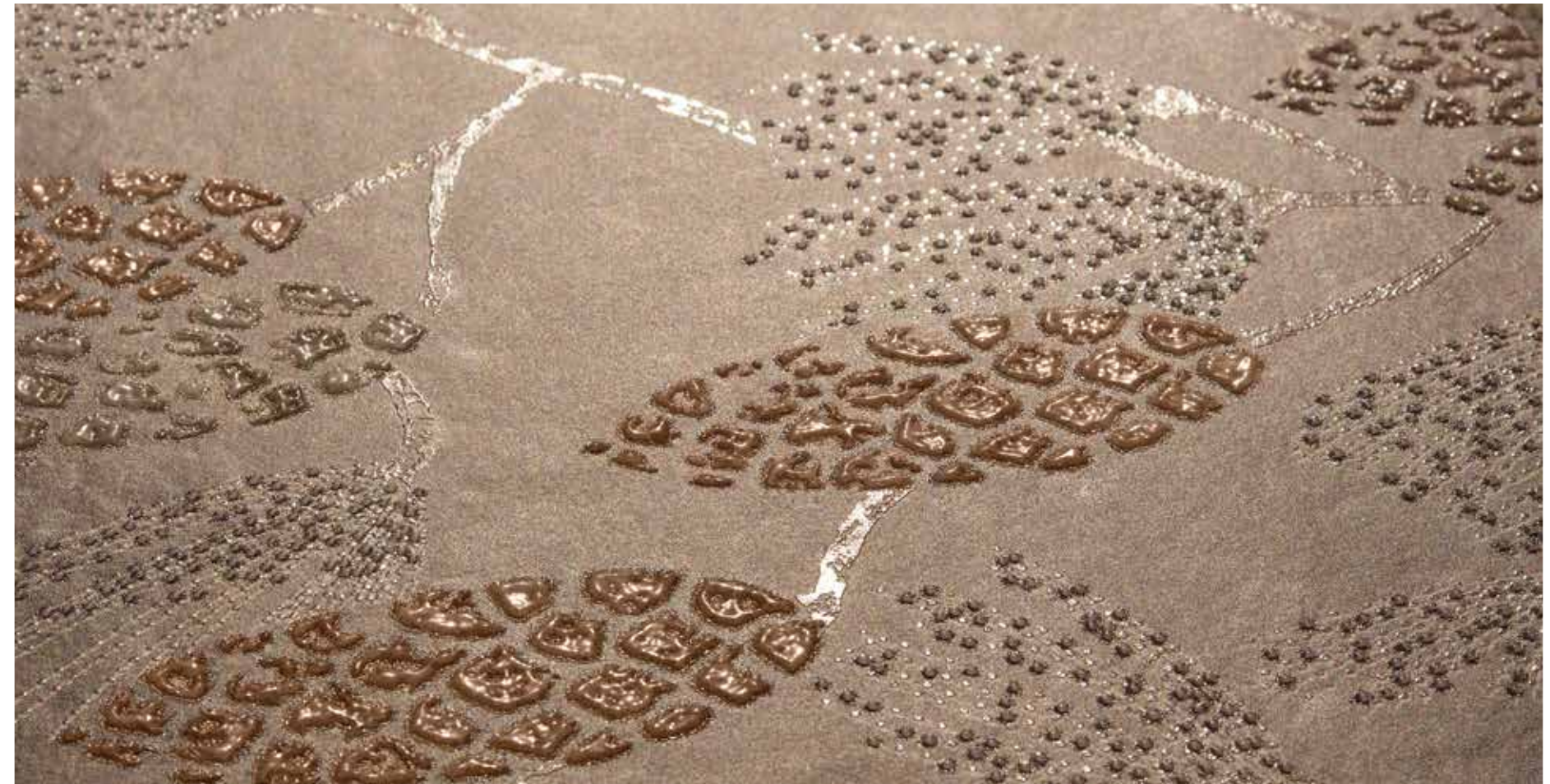
MURETTO SILVER  
30x90





# DECORO PINE TAUPE

30x90





RIGHE EARTH  
30x90





# URBAN STYLE



**WALL:** Absolute Decoro Corten 30x90 cm | Absolute Wood Taupe 20x120 cm  
**FLOOR:** Absolute Wood Ivory 20x120 cm



DECORO CORTEN  
30x90











DECORO PINE GREY  
30x90





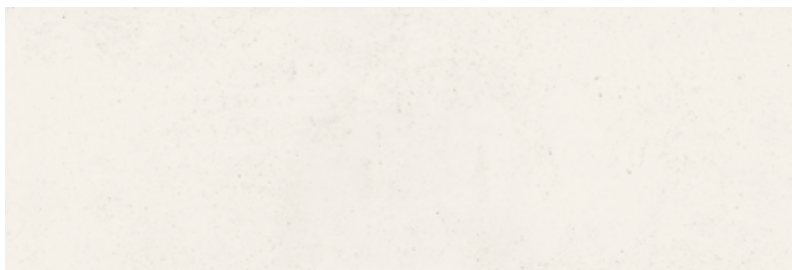
# RESIDENTIAL KITCHEN





# ABSOLUTE

GRES PORCELLANATO – RETTIFICATO / PORCELAIN STONEWARE – RECTIFIED  
30x90 cm 12"x36" | Spessore / Thickness 8 mm / 0.31"



8000112 Absolute Ivory  
30x90 12"x36"

5x **148**  
10 Printings



8000111 Absolute Ice  
30x90 12"x36"

5x **148**  
10 Printings



8000114 Absolute Taupe  
30x90 12"x36"

5x **148**  
10 Printings



8000110 Absolute Grey  
30x90 12"x36"

5x **148**  
10 Printings



8000109 Absolute Righe Earth \*  
30x90 12"x36"

5x **149**  
6 Printings \* **MIX**



8000115 Absolute Decoro Tetrys \*  
30x90 12"x36"

5x **149**  
3 Printings \* **MIX**

\* **MIX**

I decori sono soggetti misti e sono inscatolati in modo casuale.  
Decorations are mixed subjects and are randomly packed.

\* Posa consigliata con fuga 2 mm. La ripresa grafica tra i decori può avere un tolleranza contenuta in 2 cm.  
Recommended installation with 2 mm joint. The tile graphic between the decorations can have a tolerance included in 2 cm.



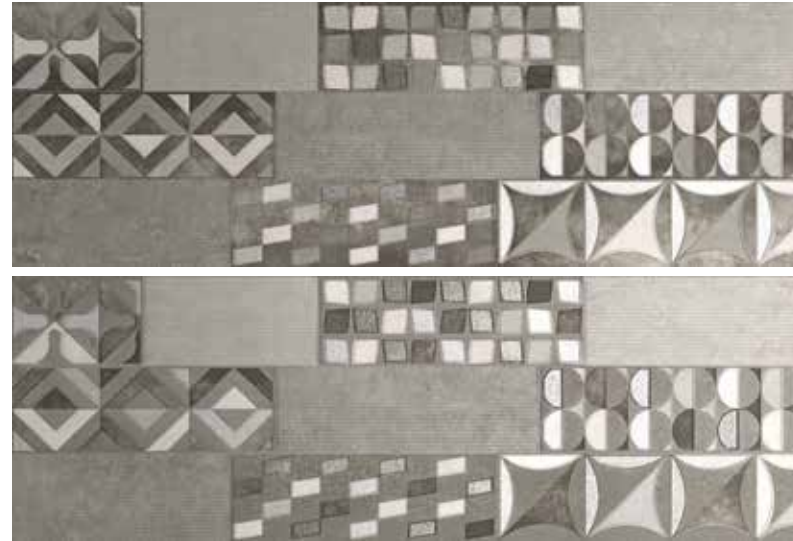
# ABSOLUTE

GRES PORCELLANATO – RETTIFICATO / PORCELAIN STONEWARE – RECTIFIED  
30x90 cm 12"x36" | Spessore / Thickness 8 mm / 0.31"



8000108 Absolute Decoro Corten \*  
30x90 12"x36"

5x **149**  
10 Printings \* **MIX**



8000113 Absolute Muretto Silver \*  
30x90 12"x36"

5x **149**  
10 Printings \* **MIX**



8000195 Absolute Decoro Pine Taupe \*  
30x90 12"x36"

4x \* **193**



8000194 Absolute Decoro Pine Grey \*  
30x90 12"x36"

4x \* **193**

\* **MIX**

I decori sono soggetti misti e sono inscatolati in modo casuale.  
Decorations are mixed subjects and are randomly packed.

\* Posa consigliata con fuga 2 mm. La ripresa grafica tra i decori può avere un tolleranza contenuta in 2 cm.  
Recommended installation with 2 mm joint. The tile graphic between the decorations can have a tolerance included in 2 cm.















\* Vendita tassativa a scatole complete Sale in full boxes only

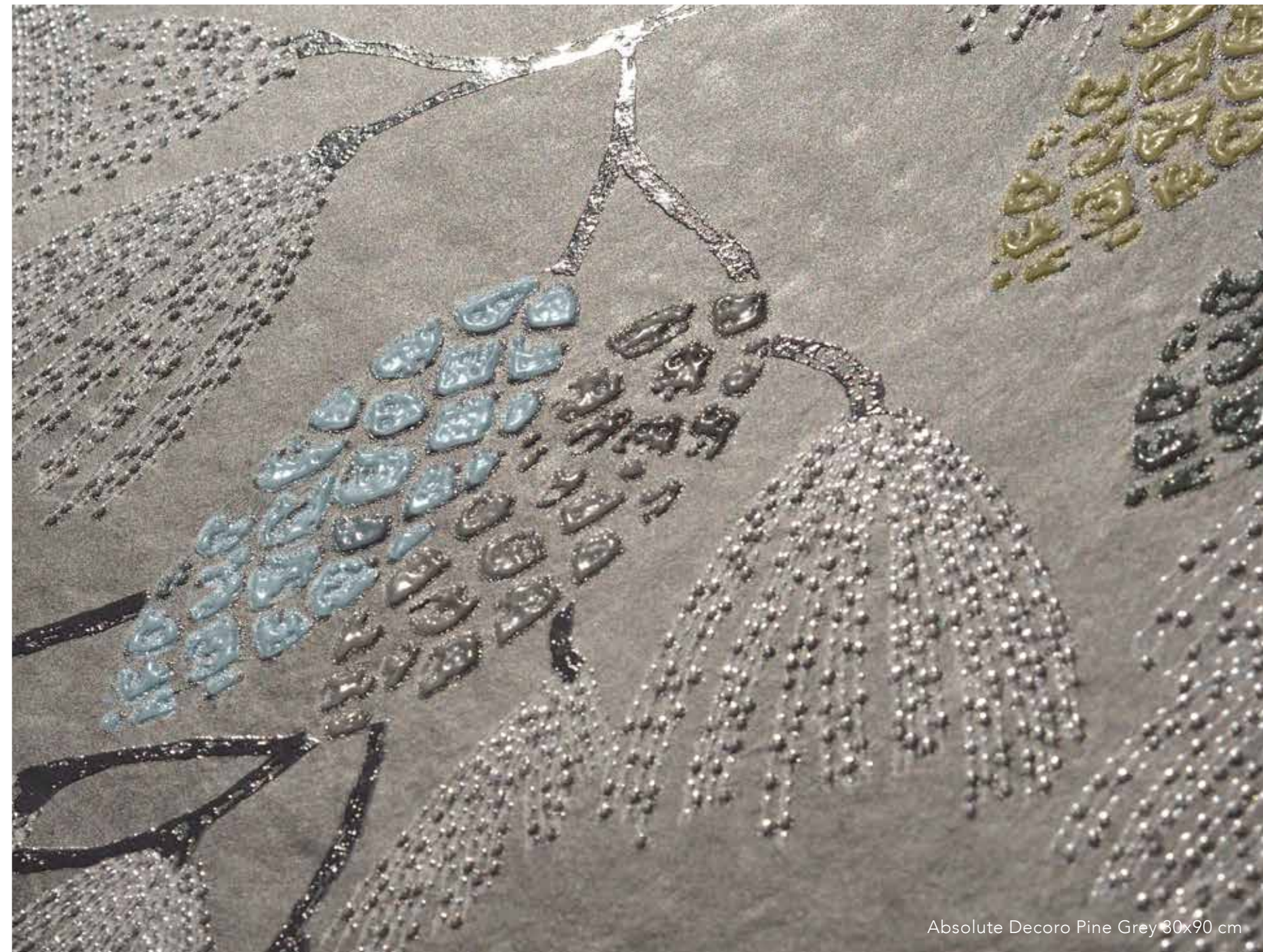
\* Posa consigliata con fuga 2 mm. La ripresa grafica tra i decori può avere un tolleranza contenuta in 2 cm.  
Recommended installation with 2 mm joint. The tile graphic between the decorations can have a tolerance included in 2 cm.

FORMATO SIZE	SPESSORE THICKNESS	PEZZI/COLLO PIECES/BOX	MQ/COLLO SQM/BOX	KG/COLLO KG/BOX	COLLI/PALLET BOX/EUROPAL	MQ/PALLET SQM/EUROPAL	KG/PALLET KG/EUROPAL	FASCIA PREZZO PRICE RANGE
30x90 Rettificato	8 mm	5	1,35	23,80	48	64,80	1142,40	<b>148</b>
30x90 Decoro Tetrys	8 mm	5	1,35	23,80	48	64,80	1142,40	<b>149</b>
30x90 Righe Earth	8 mm	5	1,35	23,80	48	64,80	1142,40	<b>149</b>
30x90 Decoro Corten	8 mm	5	1,35	23,80	48	64,80	1142,40	<b>149</b>
30x90 Muretto Silver	8 mm	5	1,35	23,80	48	64,80	1142,40	<b>149</b>
30x90 Decoro Pine	8 mm	4	1,08	-	20	-	-	<b>193</b> *

\* Prezzo al pezzo - vendita tassativa a scatole complete | Price at piece - sale in full boxes only



Caratteristica tecnica Technical feature	Norma Norm	ABSOLUTE
LUNGHEZZA E LARGHEZZA / LENGTH AND WIDTH	UNI EN ISO 10545-2	CONFORME / IN ACCORDANCE
SPESSORE / THICKNESS		CONFORME / IN ACCORDANCE
RETTILINEITÀ SPIGOLI / STRAIGHTNESS OF SIDES		CONFORME / IN ACCORDANCE
ORTOGONALITÀ / RECTANGULARITY		CONFORME / IN ACCORDANCE
PLANARITÀ / SURFACE FLATNESS		CONFORME / IN ACCORDANCE
ASPETTO / ASPECT		CONFORME / IN ACCORDANCE
 ASSORBIMENTO D'ACQUA / WATER ABSORPTION	UNI EN ISO 10545-3	≤ 0.5%
 RESISTENZA A FLESSIONE / FLEXURAL STRENGTH	UNI EN ISO 10545-4	≥ 35 N/mm <sup>2</sup>
MODULO DI ROTTURA / BREAKING STRENGTH		≥ 1300 N
 DETERMINAZIONE DELLA RESISTENZA ALL'URTO DETERMINATION OF IMPACT RESISTANCE	UNI EN ISO 10545-5	0,90
 RESISTENZA ALL'ABRASIONE (METODO PEI) ABRASION RESISTANCE (PEI-METHOD)	UNI EN ISO 10545-7	PEI 3 + 5
 COEFFICIENTE DI DILATAZIONE TERMICA LINEARE THERMAL EXPANSION COEFFICIENT	UNI EN ISO 10545-8	(5,7÷5,9) X 10 <sup>-6</sup> /°C
 RESISTENZA AGLI SBALZI TERMICI THERMAL SHOCK RESISTANCE	UNI EN ISO 10545-9	RESISTENTE RESISTANT
 DETERMINAZIONE DELLA DILATAZIONE DOVUTA ALL'UMIDITÀ DETERMINATION OF MOISTURE EXPANSION	UNI EN ISO 10545-10	0,0 mm/m
 DETERMINAZIONE DELLA RESISTENZA AL CAVILLO DETERMINATION OF CRAZING RESISTANCE	UNI EN ISO 10545-11	RESISTENTE RESISTANT
 RESISTENZA AL GELO FROST RESISTANCE	UNI EN ISO 10545-12	INGELIVO FROST-RESISTANT
 RESISTENZA AGLI AGENTI CHIMICI RESISTANCE TO CHEMICALS	UNI EN ISO 10545-13	MIN. CLASS B LB HB
 RESISTENZA ALLE MACCHIE STAIN RESISTANCE	UNI EN ISO 10545-14	MINIMO CLASSE 3 MINIMUM CLASS 3
 RESISTENZA ALLO SCIVOLAMENTO SLIP RESISTANCE	DIN 51130	R9
	DIN 51097	A
	C.o.F B.C.R./D.M. 236 14/6/89	>0,40
	D.C.o.F / ANSI A326.3	>0,42
 REAZIONE AL FUOCO REACTION TO FIRE	96/603/CE	AI <sub>FL</sub> /AI
 GRADO DI VARIAZIONE CROMATICA AESTHETIC CLASSES	ANSI A137.1	V2



Absolute Decoro Pine Grey 30x90 cm





©2024 CERAMICHE MARINER S.P.A. Via Fiandre, 28 - 42014 Castellarano (RE) Italia  
Tel. +39 0536.858266 Email [info@cermariner.it](mailto:info@cermariner.it) [www.cermariner.it](http://www.cermariner.it)

